

(5) : standby

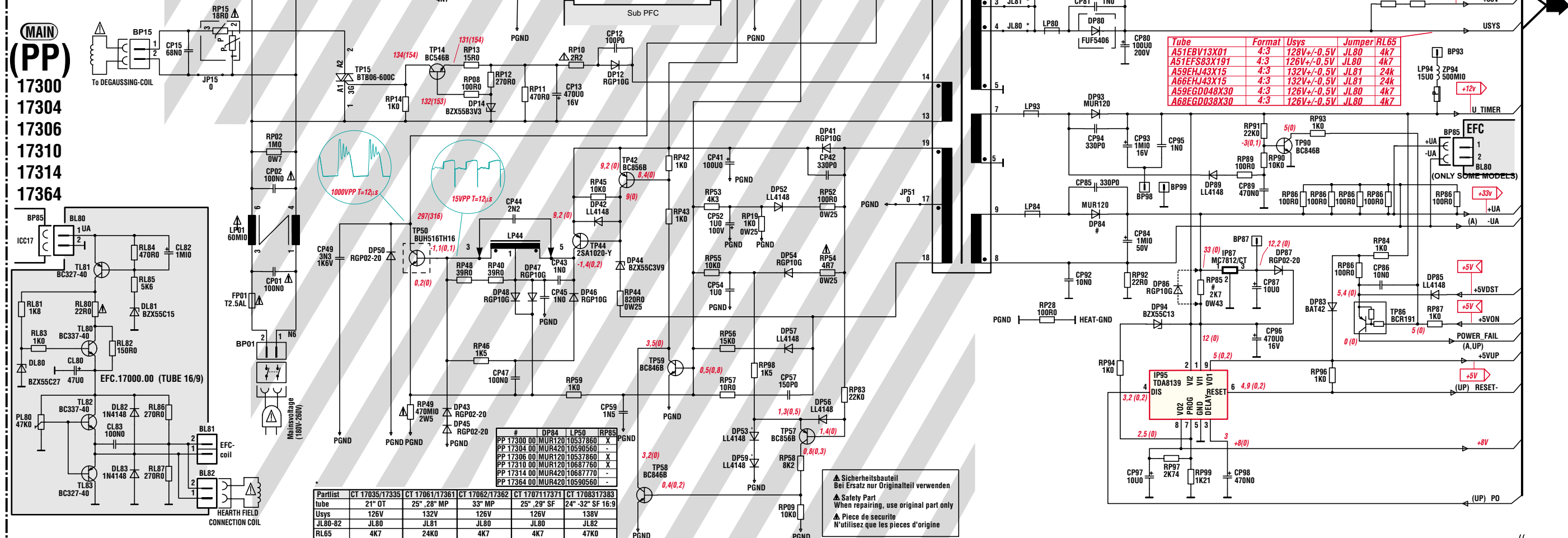
Attention :
Mesure dans le bloc alimentation
- Utiliser la masse du bloc alimentation
(PGND).

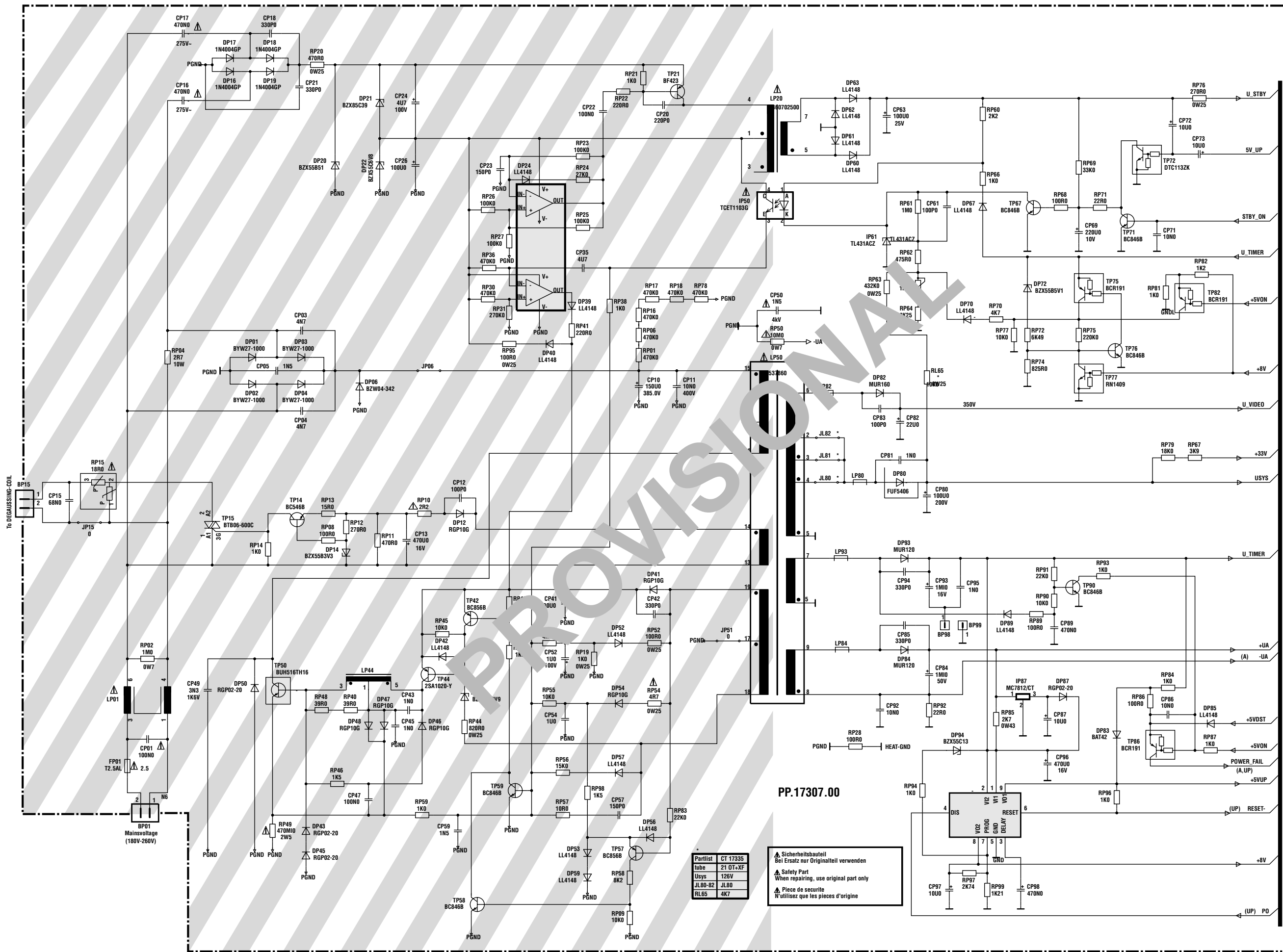
Achtung:
Bei Messungen im Primärnetzteil
- Primärnetzteilmasse verwenden
(PGND).

Attenzione :
- misure nell'alimentatore primario
- usare massa alimentazione primario
(PGND).

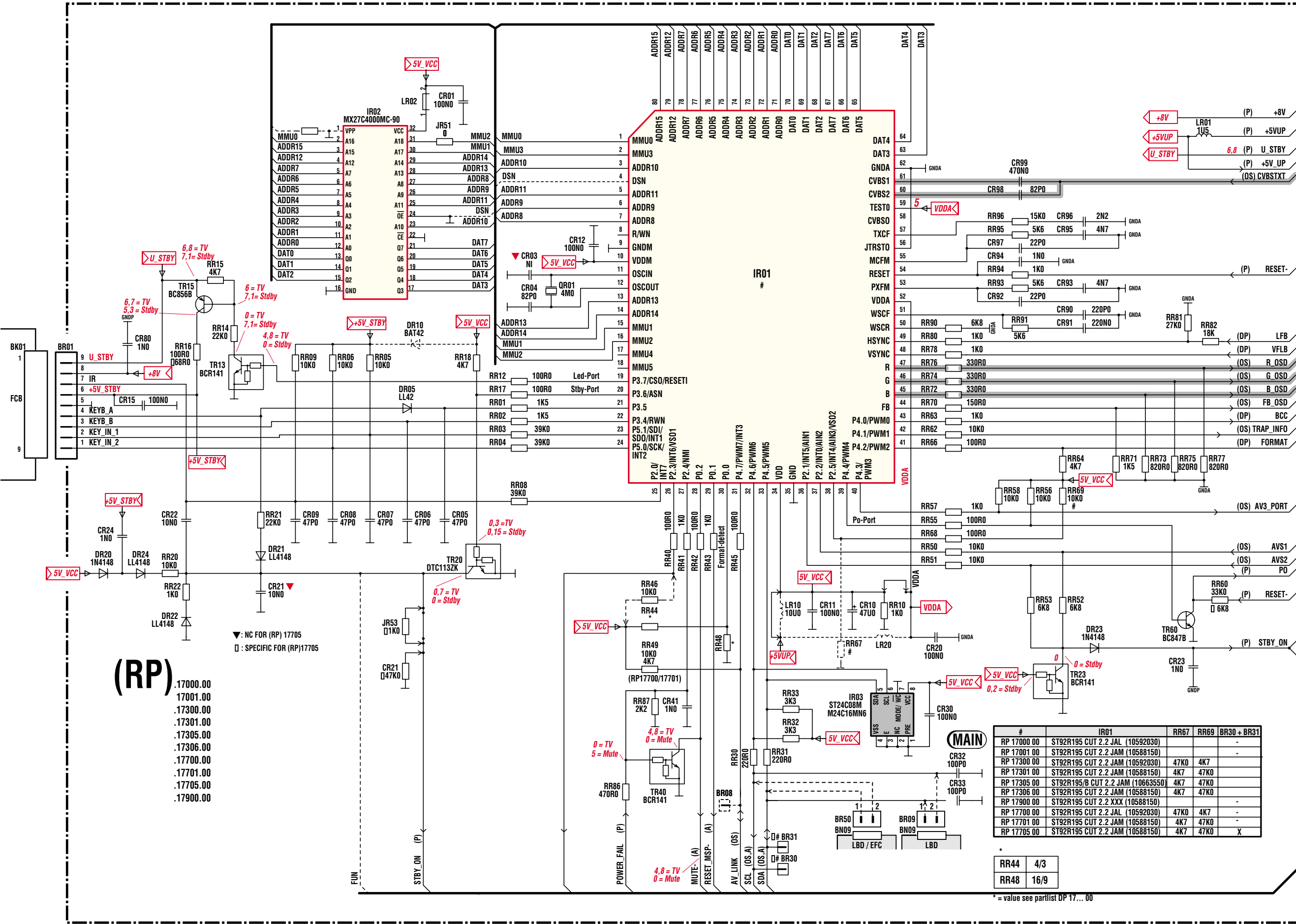
Cuidado:
Medida en el bloque de alimentacion
- Utilizar la masa del bloque de alimentacion (PGND).

Part of board connected to mains supply.
Partie du châssis reliée au secteur.
Primärseite des Netzteils.
Parte dello chassis collegata alla rete.
Parte del chassis conectar a la red.

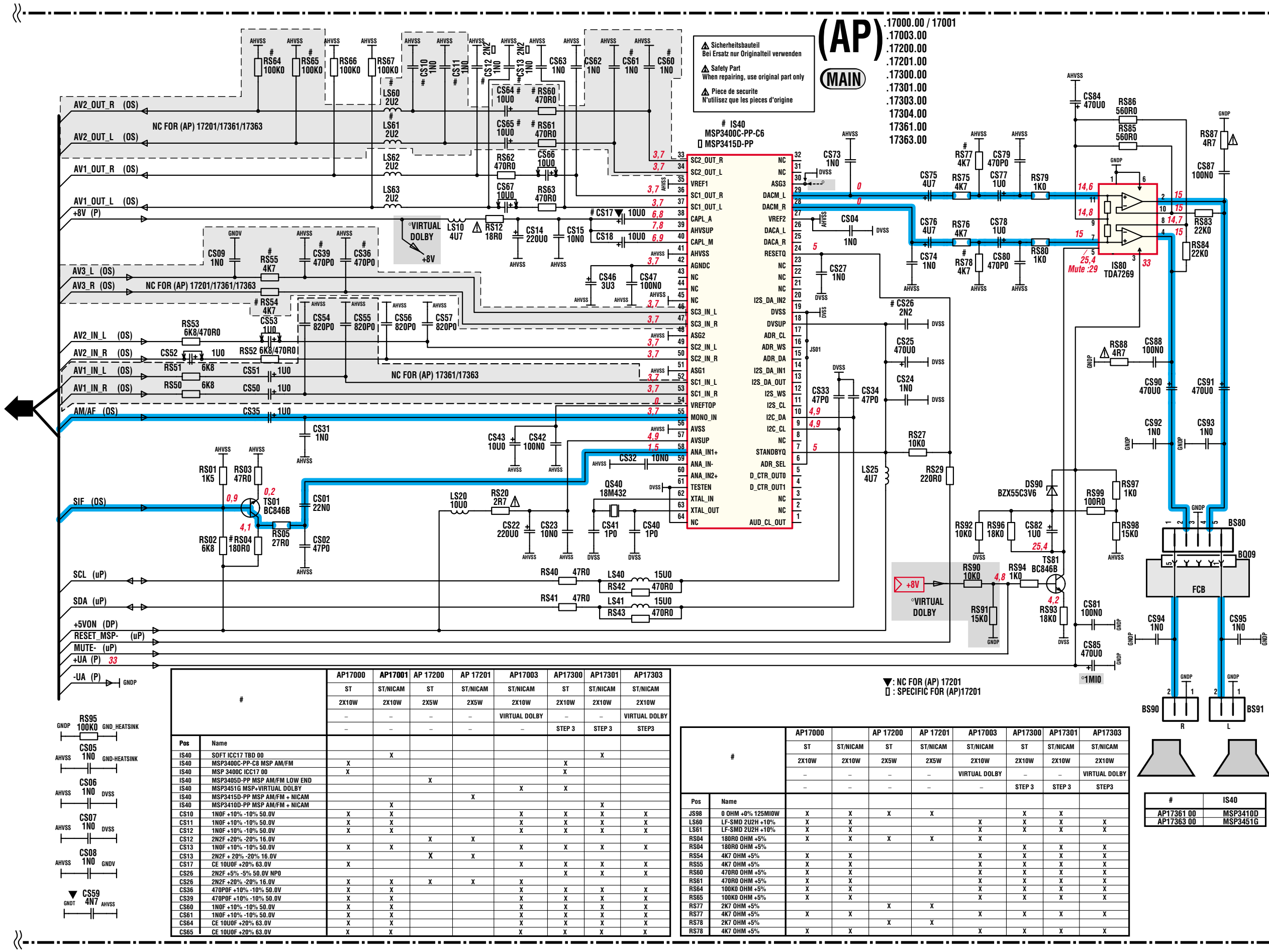






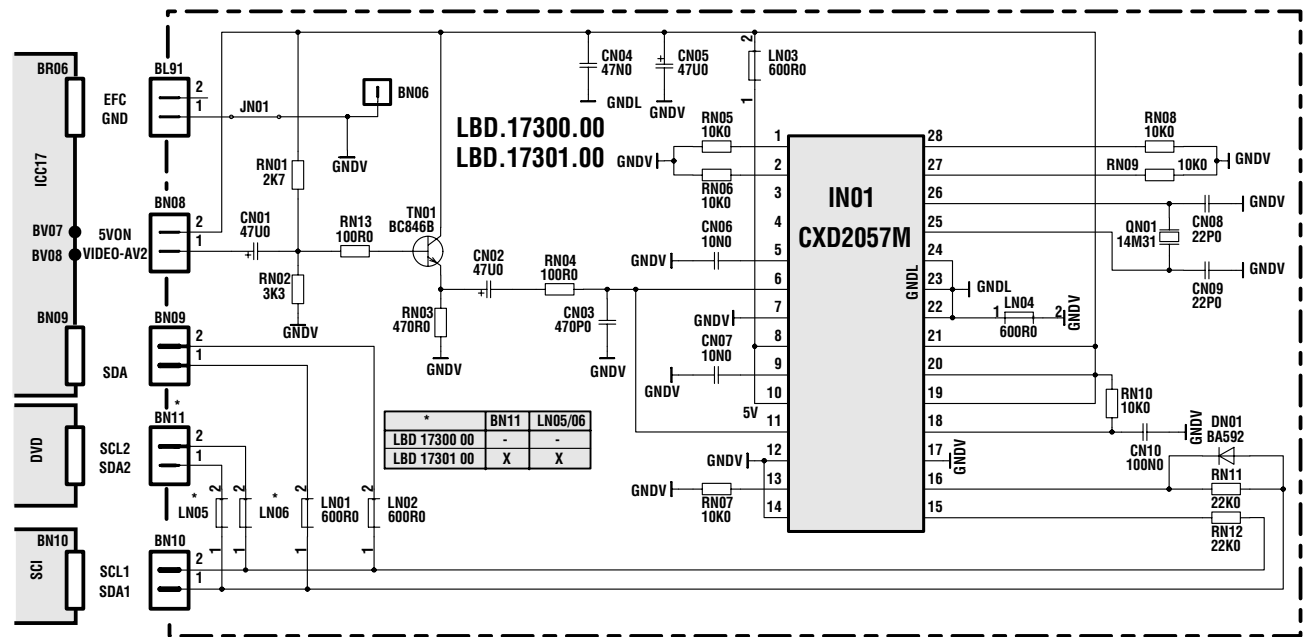


AMPLIFIER SCHEMATIC DIAGRAM - SCHEMA DE L'AMPLIFICATEUR - SCHALTBILD AUDIO-SIGNALVERARBEITUNG - SCHEMA DELL' AMPLIFICATORE
ESQUEMA DEL AMPLIFICADOR
(STEREO)

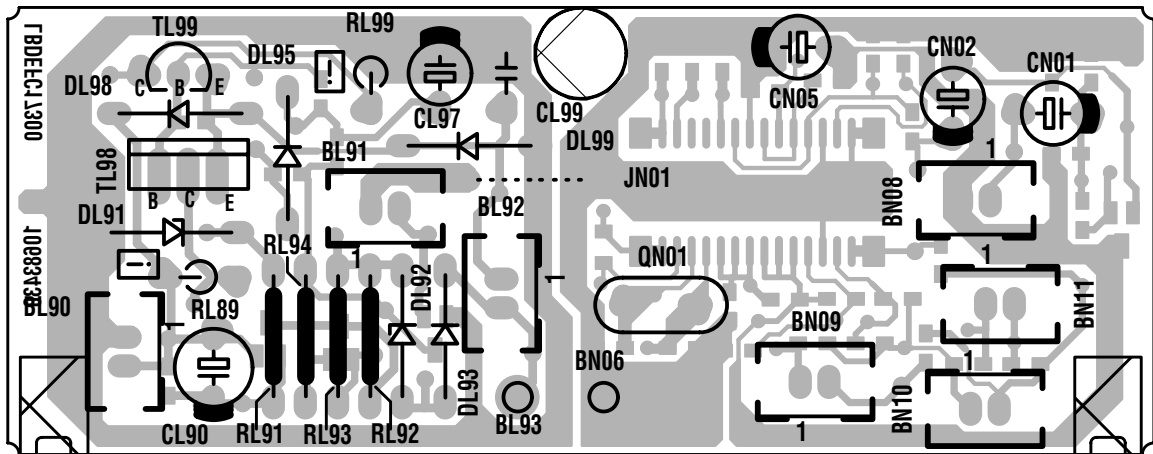


LETTER BOX DETECTION MODULE - MODULE DE DETECTION "LETTER BOX" -
LETTER BOX DETECTION-MODUL MODULO RIVELAZIONE LETTER BOX - MÓDULO
DETECTOR DEL MODO BUZÓN

LBD 17300



COMPONENT SIDE - COTE COMPOSANTS - BESTÜCKUNGSSEITE - LATO COMPONENTI -
LADO COMPONENTES



SOLDER SIDE - CÔTE SOUDURES - LÖTSEITE - LATO SALDATURE - LADO SOLDADURAS

